



Compliance with Standards

CAAC: AC-137-CA-2015-09
 SAC: GB/T 7256
 ICAO: Volume 14, Volume I
 FAA: AC 150/5345-51
 NATO: STANAG 3316

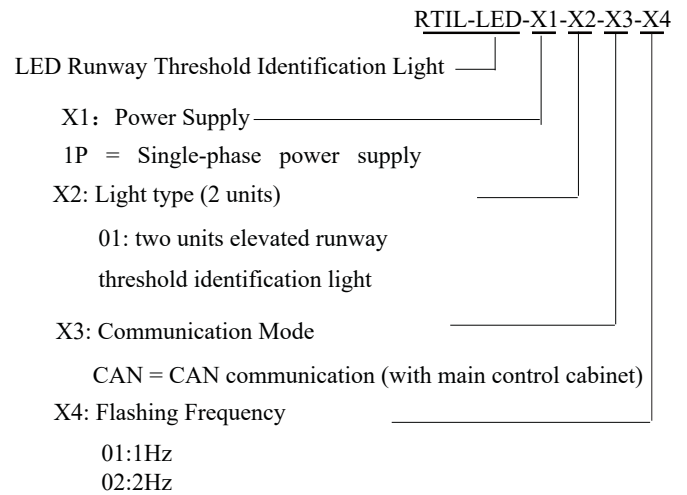
Application/Use

RETIL shall be flashing white lights, located symmetrically about the runway centerline, in line with the threshold

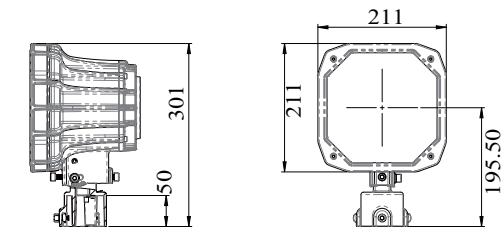
Features

- Light distribution and chromaticity conforming to the specifications contained in FAA-E-2628E and CAAC of China.
- LED lighting is featured by long working life, energy conversation, maintenance-free, which brings enormous economic benefits to customers.
- Unit control is integrated into light, which has compact structure and more reliable operation.
- Main body of the lighting fixtures is made of aluminum alloy material with anti-corrosion surface treatment, and all fasteners are made of stainless steel, thus being applicable to all kinds of harsh environment.
- The main control cabinet and all unit cabinets have CPU, which works independently and collaborative cooperation is achieved through the bus communication.
- Compared with traditional xenon flash, LED flash has low power consumption and high power factor.
- Integrated Driver Circuit.
- The main control cabinet and each unit control cabinet have CPU, which works independently and collaborative cooperation is achieved through the BUS communication.
- Each lighting fixture has the unit control cabinet and simple cable wiring for easy maintenance and inspection.
- Unique system reliability design ensures that Fault of any components of the lighting fixtures will not result in system paralysis.
- The system has light source service life detection, flash missing detection, times accounting and online detection, etc.
- The monitoring system can achieve remote monitoring, upload the operation state, and perform local control.
- The anti-thunder measures are provided for the circuit, power source and communication cable and the anti-thunder class complies with the standard of FAA.
- The elevated lighting fixtures can be connected with 1 inch or 2 inches frangible pipe, easy installation, firm and reliable.
- With precision machining, the forged frangible components comply with the requirements of FAA, which have steady and reliable performance.

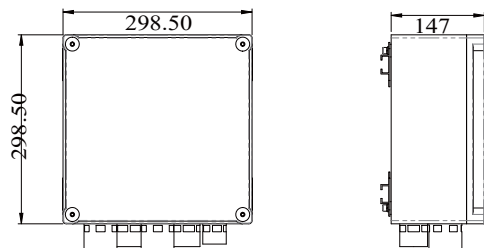
Ordering Information



Dimensions

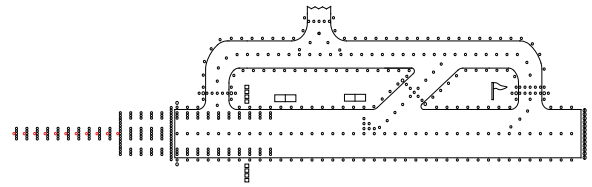


Dimension of Elevated Flashing light



Dimension of the unit wiring box

* Please provide detailed installation info while ordering, parts and accessories should be ordered separately specific with order no.



Installation

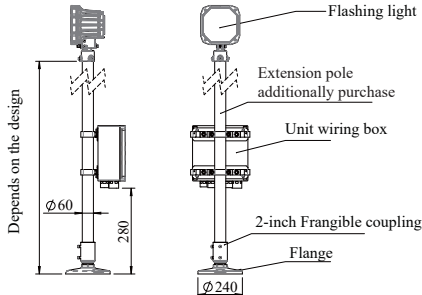


Figure 1-1.

Elevated flashing light with upright pole installation
Unit wiring box with backpack type installation

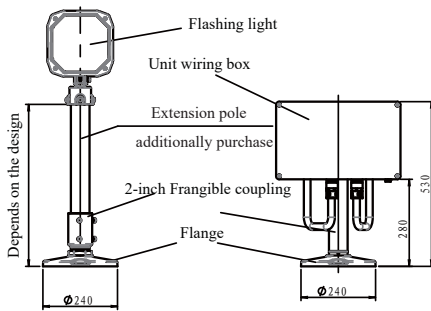


Figure 1-2.

Elevated flash light with upright pole installation
Unit wiring box with supporting pole installation

Spare Parts

Component order

No	Name	Order Number	Description
1	Main control cabinet	979302	Main control cabinet assembly
2	Elevated flashing light	66280	Elevated flashing light lamp head
3	Unit wiring box	79308-D	with frangible coupling and flange
4	Frangible coupling joint	924252	2-inch frangible coupling (assembly)
5	Flange	FL-10	Flange 240(G2-H35)

Spare articles order

Component	Spare Articles	Order Number	Description
Main control cabinet	Main control cabinet panel assembly	66110	
Elevated flashing light	Optical cover gasket	41186	Gasket
	LED assembly	979248	LED assembly 175×175 (with lens)
	Optical cover	31159	Front glass (192×192×C43)
	Light body gasket	41188	O-ring gasket
	Rear cover assembly	924D11	Rear cover LED 140 (with circuit board)

Technical Parameters

Runway threshold identification light:

Unit power: 44VA

Beam angle: horizontal ±15°, vertical 0-10°

Flash frequency: once or twice per second, adjustable

Light intensity: I class 2% (150~450 cd)

II class 10% (750~2,250 cd)

III class 100% (7,500~22,500 cd)

Elevation angle: 0 to 15° vertical

Accessories

No.	Order Number	Description
1	54220	Calibrator assembly

Packing Data

Packing	Dimension	Gross weight
1×main control cabinet	550 x 550 x 1400 mm ³	55kg
1×elevated flashing light	262×302×380 mm ³	6.5 kg
1×unit wiring box	440 x 350 x 550 mm ³	9.5kg
6× flange	240 x 240 x 180 mm ³	8.4kg
16×frangible coupling joint	340 x 340 x 190 mm ³	12.3kg